

# Progress Report of SKDKHEP

**Project** : Solu Khola (Dudhkoshi) Hydroelectric Project (86 MW)  
**Employer** : Sahas Urja Ltd.  
**Engineer** : Consortium of Hydro-Consult Engineering Ltd. and Fichtner GmbH & Co. KG  
**Civil Contractor** : CE Construction Pvt. Ltd.  
**HM Contractor** : Machhapuchhre Metal and Machinery Works (P). Ltd.  
**EM Contractor** : Voith Hydro Pvt. Ltd.

Due to the worldwide spread of COVID-19 (Corona Virus Pandemic) the work was disturbed for few months from 24<sup>th</sup> March 2020. Nationwide lockdown imposed by the government affected the smooth progress of the construction work and created difficulties in transportation of construction materials and manpower required for the project. Since this period was the most favorable period for all type of construction works this lockdown has badly affected the progress of the project.

Civil-Surface Works	% Completion with respect to concreting
Weir, Undersluice and Stilling Basin	50%
Intake, Gravel Trap and Flushing	99%
Approach Culvert	100%
Settling Basin	92%
Headrace Canal	15%
Powerhouse	50%



1. Headworks view



2. Saddle support at penstock alignment



3. Machine foundation work at powerhouse.

Civil-Under Ground Works	% Completion with respect to excavation
Headrace Tunnel Inlet	56%
Headrace Tunnel Outlet	72%
Penstock Tunnel (Inclined Section)	100%
Penstock Tunnel (Vertical Section)	43%
Adit Tunnels	100%
Surge Tunnel	91%

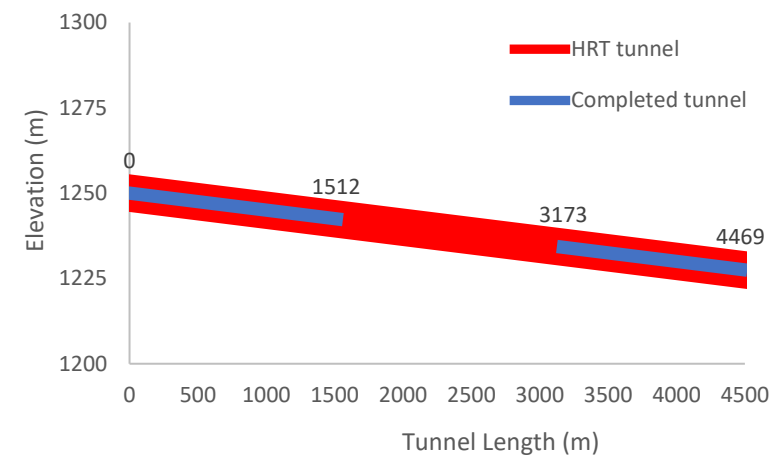


Figure 4. Headrace tunnel progress

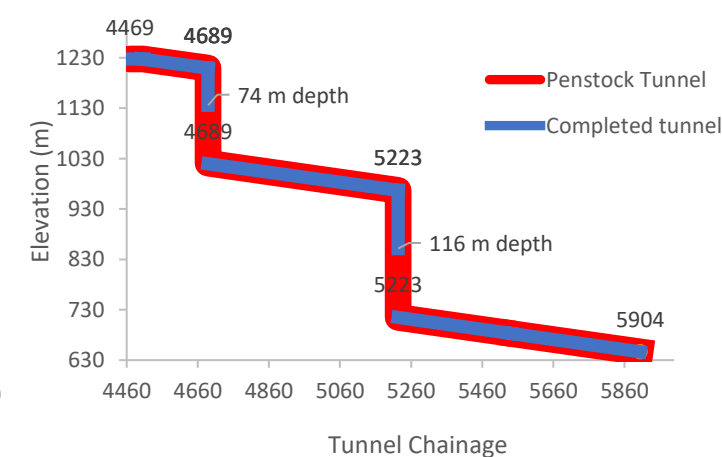
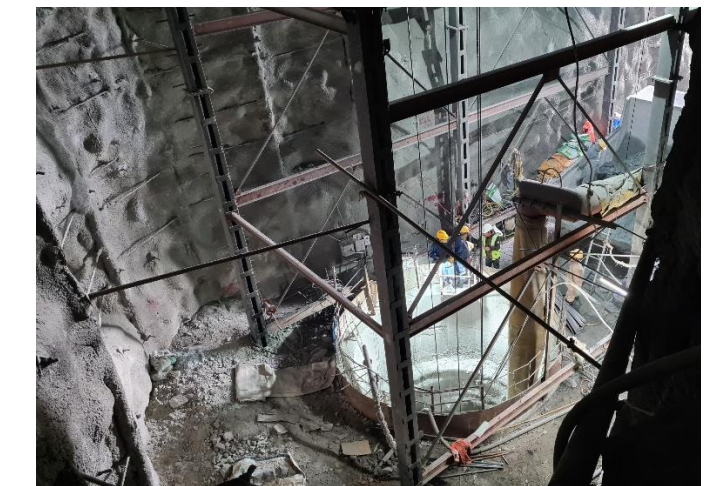


Figure 5. Penstock tunnel progress



6. Vertical shaft 1

## Hydro-Mechanical Works:

- Rolling and welding of penstock pipes - **43% completed**
- Blasting and painting of penstock pipes - **31% completed**
- Steel lining at headworks - **100% completed**
- Embedded parts of gates at headworks - **93% completed**
- Transportation of plates - **89% completed**

## Electro-Mechanical Works

- Earth mat transported to site and installed at powerhouse foundation - **65% completed**
- Design of electro-mechanical components - **92% completed**



7. Penstock pipe fitting at powerhouse unit 1



8. Saddle plate installing at saddle support.

**Note:** The Reporting period is till December end 2020. The latest site photos are updated on timely basis in the Gallery section of our website.